

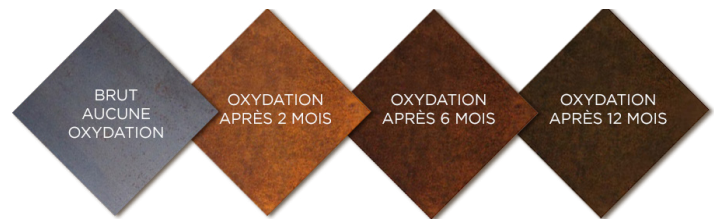
# FICHE TECHNIQUE

## Animaux



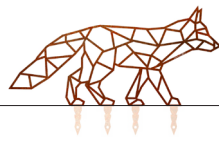
### Caractéristiques :

- Acier corten (cf F.T. «Acier corten»)
- à planter



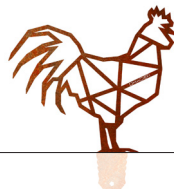
**Chat**

61 x 49 cm  
Epaisseur 2 mm  
1,2 kg



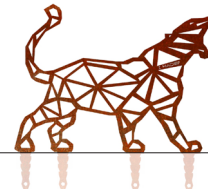
**Renard**

115 x 55 cm  
Epaisseur 4 mm  
4 kg



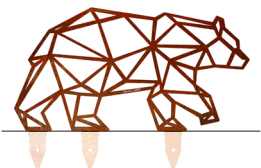
**Coq**

67 x 79 cm  
Epaisseur 4 mm  
4,4 kg



**Panthere**

118 x 88 cm  
Epaisseur 4 mm  
9,9 kg



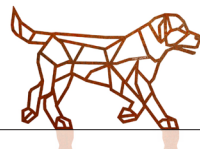
**Ours**

137 x 72 cm  
Epaisseur 4 mm  
10,5 kg



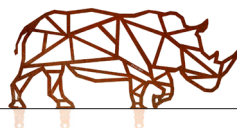
**Lapin**

28 x 43 cm  
Epaisseur 2 mm  
0,6 kg



**Labrador**

115 x 74 cm  
Epaisseur 4 mm  
7 kg



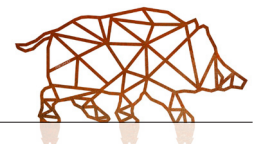
**Rhinoceros**

142 x 61 cm  
Epaisseur 4 mm  
8,9 kg



**Bulldog**

72 x 78 cm  
Epaisseur 4 mm  
3,3 kg



**Sanglier**

118 x 60,5 cm  
Epaisseur 4 mm  
8,5 kg

